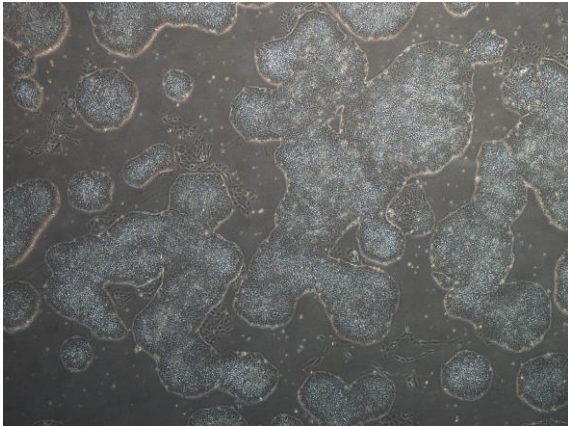
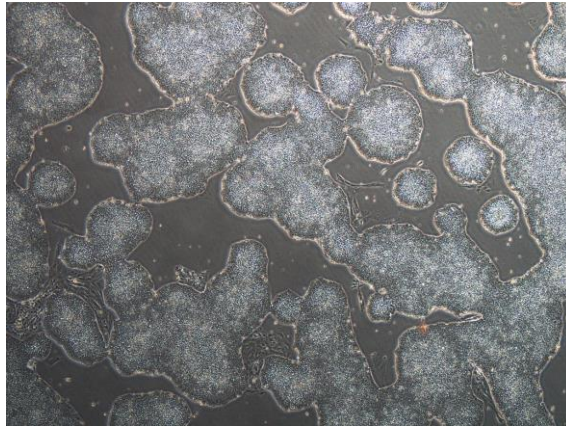


## 【 CiRA-j-1005 】 Morphology of iPSC colonies

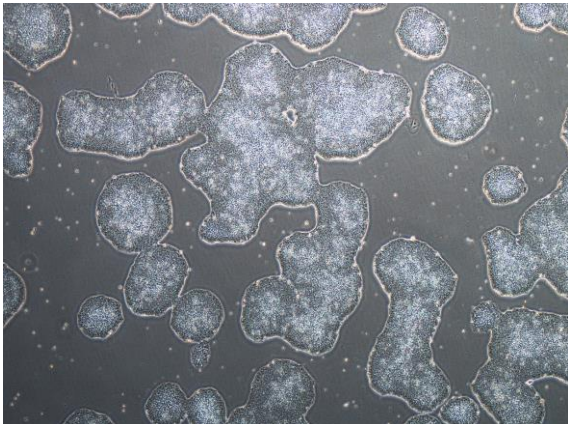
CiRA-j-1005-A: passage-2



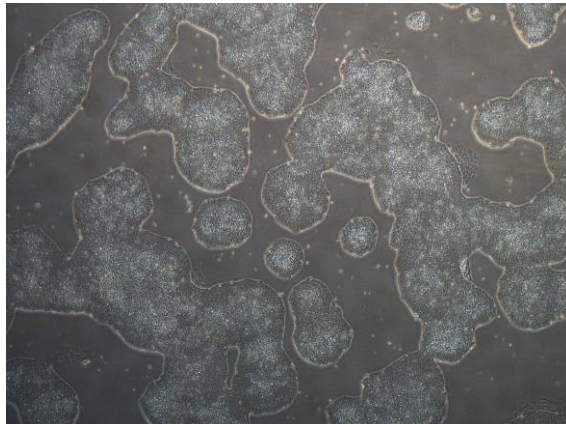
CiRA-j-1005-B: passage-2



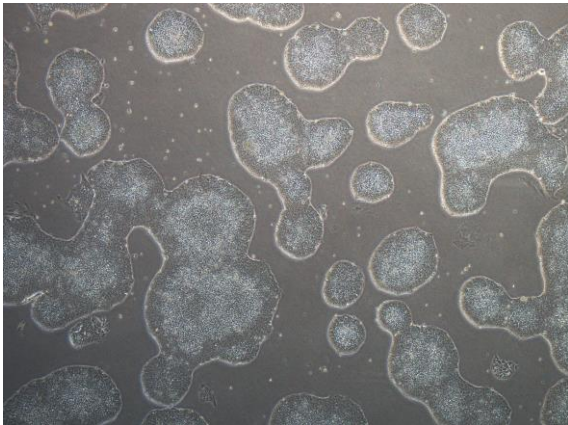
CiRA-j-1005-C: passage-2



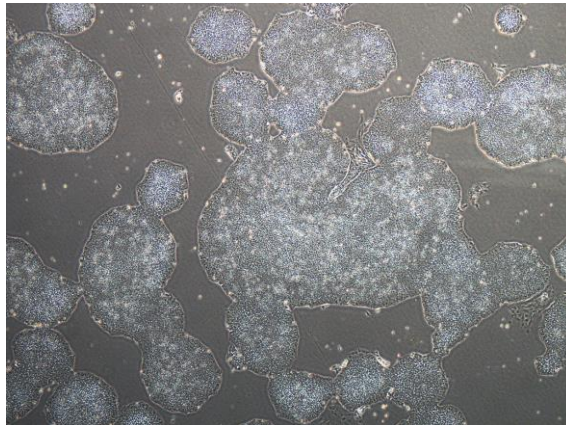
CiRA-j-1005-D: passage-2



CiRA-j-1005-E: passage-2



CiRA-j-1005-F: passage-2



( All images were captured at 4x magnification )